



Energy Features

Foundation	Precast concrete basement and crawlspace with R-12.5 wall and slab edge insulation
Wall Construction	2x6 @ 24" o.c.
Wall Insulation	R-20 spray foam insulation + ½" rigid foam exterior sheathing
Rim Joist Insulation	R-20 spray foam insulation
Roof Construction	Rafters
Ceiling Insulation	R-24 unvented attic
Windows	Low-e, gas-filled wood; U-0.30 SHGC 0.27
HVAC	92 AFUE gas furnace; 14 SEER air conditioner, Multi-zone system; Timers on spot ventilation fans
Ducts	100% in conditioned space
Water Heating	0.87 EF gas tankless
Lighting	40% ENERGY STAR fixtures; 55% CFLs; LED undercabinet lights
Appliances	ENERGY STAR refrigerator, clothes washer, and dishwasher
Innovative Features	Tubular skylight; Advanced framing techniques including 24" o.c. framing, right-sized headers, open corners, ladder blocking; Programmable thermostat; PEX plumbing; Lighting controls; On-demand hot water recirculation; Energy meter for homeowner feedback
Duct Leakage Test	2 cfm to exterior/158 cfm total @ 25 Pa
Blower Door Test	1.9 ACH50
HERS Index	48

Seville Consulting

Seville Consulting is dedicated to educating the residential construction industry about energy efficiency and green building. This home, a 2007 Southern Building Show showcase home, gave Seville Consulting a tremendous opportunity to fulfill that mission. Hundreds of builders and industry professionals who visited the show home were introduced to its green building and energy efficiency features in educational information presented throughout. Not content to stop at educating the industry, Seville Consulting installed a home energy monitoring device to help homebuyers understand their energy use – a key to energy-efficient home performance. Additionally, the home's in-town location facilitates the homeowners' reduction of their energy use for transportation.

Moderate Climate, Custom Home

Years in business: 3
Average homes built per year: 1
Member: No Affiliation

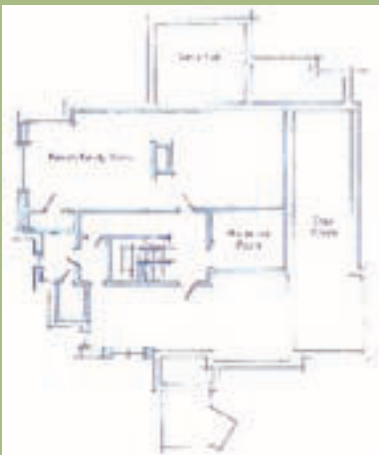
House Description

Size: 7,172 s.f.
Location: Atlanta, Ga.
Construction cost: \$120 per s.f.
Date completed: June 2007

Seville Consulting would like to thank:

- Richard and Cindy Wallace
- Harrison Design Associates
- Lithonia Lighting
- Icnene
- Cosella Dorken
- Superior Walls
- Kohler
- Marvin
- Rinnai
- Schluter Systems

Floor Plan



Basement



First Floor



Second Floor